

Historic Glyndon Baltimore County's First Historic District



Community Newsletter

Historic Glyndon, Inc., Spring 2019 • <http://historicglyndon.org>

President's Letter

Today, spring is flirting with Glyndon and whispering promises of warmth, sunshine and hope after the cold, hard winter. As I sit on my back porch steps, gazing out at my flooded, moss covered yard, I decided to make a list of things I am thankful for.

The daylight hours are getting longer;

The sun is shining and it is not raining or sleeting today;

I did not have to scrape frost off my windshield this morning;

My yard is turning green and daffodils are sprouting;

Someday soon I can open my windows to fresh air and birdsong;

There is a very happy cat napping in my sunny window;

My old creaky dog is still able to walk around the yard and sniff for bunnies;

I live in a funny old (historic) house;

I will soon be able to sit on my front porch, read, and drink iced tea;

I have a beautiful neighborhood to walk in;

I can walk to the Post Office and the market;

I have friendly neighbors whom I also consider good friends;

And finally, I can call Glyndon home.

Pamela Becker

President, Historic Glyndon, Inc.

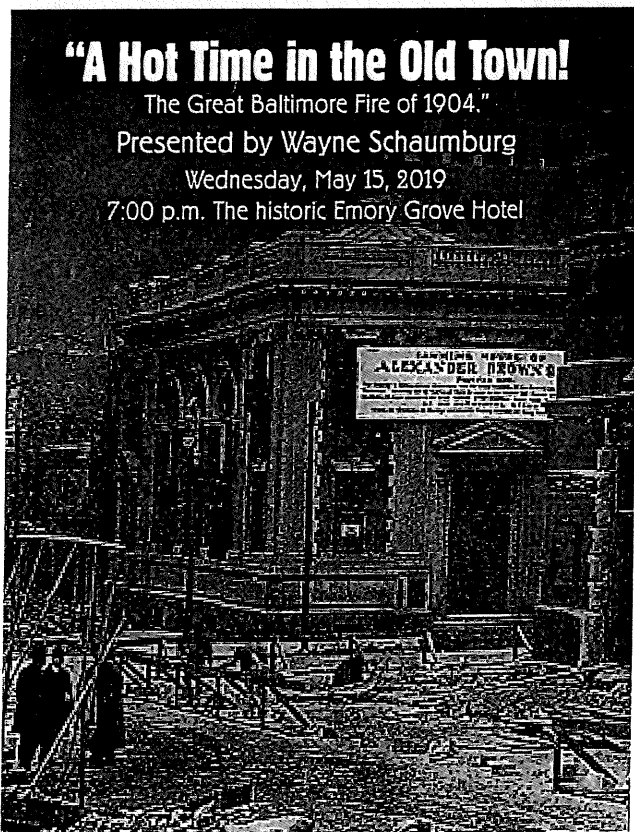
"A Hot Time in the Old Town!"

The Great Baltimore Fire of 1904."

Presented by Wayne Schaumburg

Wednesday, May 15, 2019

7:00 p.m. The historic Emory Grove Hotel



On a cold Sunday in February 1904, a gentleman flicked his cigar butt on the sidewalk in front of Hurst's dry goods store, where the Royal Farms Arena now stands. The still smoldering cigar landed on a box of dry goods and so began the Great Baltimore Fire of 1904. It burned for more than a day, destroying more than 1,500 buildings.

On this 115th anniversary of the Great Baltimore Fire of 1904, HGI is pleased to host Baltimore historian Wayne Schaumburg as he takes us on a walk through history to revisit Baltimore in 1904 and witness the fire, from the fateful first spark to the rebuilding effort. With archival photos, we'll see the firefighters who fought the flames, the decimated aftermath, and the people who lived through it.

Light refreshments will be served.

Wayne R. Schaumburg has been a prodigious evangelist for the history of his native city for over 25 years. He has brought Baltimore City history to life through lectures and courses on a variety of Baltimore topics, including architecture and the Baltimore Fire of 1904. His tours of Green Mount Cemetery have introduced hundreds of people to that remarkable place, and, through its monuments to Baltimore's social, cultural, and economic history. Mr. Schaumburg has served on the boards of Baltimore Heritage, the Irish Railroad Workers Museum, the Baltimore City Historical Society, and the Friends of the Perry Hall Mansion.

The Houses of Glyndon 506 Bond Avenue



This house was built in 1896 for James C. and Mary B. Kinear. However, just prior to that, this was the site of St. George's Hall, a school for male students that provided boarding facilities. Established in 1876 on property owned by Mr. George M. Gill, a Baltimore City lawyer, the school was run by Prof. J. C. Kinear, Gill's son-in-law. Besides being an instructor, Kinear was also appointed postmaster of St. George's in 1886. During summer vacations, Mrs. Kinear operated a boarding house in the spacious building, accommodating up to 60 boarders who chose to escape the heat of Baltimore's oppressive summers. A *Maryland Journal* article (June 19, 1886) stated that, "During the summer St. George is alive with city folk rustivating." A public sale ad in 1888 for the estate of Mr. Gill describes the school property as including a school and boarding house containing forty rooms. The approximate 13 acres of land also included a barn, icehouse, chicken house, and other substantial outbuildings. It wasn't until 1892 that the Kinears bought the property from the Gill family for \$7000.00.

Prior to establishing this school, Prof. Kinear, a native Virginian, had been connected with the old St. Timothy's Hall in Catonsville, Maryland, and later served as principal of Pembroke School on Madison Avenue in Baltimore. St. George's Hall drew students from various sections of the United States, with many coming from the middle and southern states. An ad in the *Baltimore American* newspaper (August 1, 1887) announced that the school was for

boys and young men and that it was "an English, Classics and Commercial Boarding School of established reputation." The cost to attend ranged from \$220 to \$300, according to age. An ad in the *Maryland Journal* (August 20, 1887) declared that the school was "Unsurpassed in teachers, accommodations and situation" and mentioned "Backward boys specially aided."

A lengthy article in the *Maryland Journal* (June 19, 1886) describes a gala commencement day for the school and its pupils and guests. "In the morning began the arrival of patrons and friends of the school, including many fascinating young ladies who, later on, seemed themselves to be fascinated by the genteel bearing and politeness of deportment of the young gentlemen of the school." In the Student's Hall, orations and select readings were given, interspersed with popular college songs. Floral tributes were bestowed, and gold and silver medals were presented for scholarship, for diligence and progress, and for improvement and progress. After Miss Dora Kinear, the Professor and Mrs. Kinear's daughter, entertained those gathered with two musical solos with her "extremely sweet, rich voice," the intellectual exercises came to an end and the crowd "took their way to the dining hall, where they proceeded to deprive the loaded tables of their contents, and, if allowable, it might be said that the way they slaughtered dead fowl, ham and tongue, and disposed of delicious strawberries, ice cream, cherries, bananas, confectionery, nuts, etc., was a caution to caterers and a terror to waiters." The feasting was followed by

parlor games, dancing, and music until almost midnight.

In the summer of 1896, tragedy struck—the school was destroyed by fire. According to an article in *The Sun* newspaper (July 16, 1896), on Tuesday, July 14, a spark from the chimney set the roof on fire. However, one of the Kinear sons extinguished it. Evidently, though, the fire continued to smolder in the rafters because in the afternoon of the next day, a fire burst out in the western end of the large, irregularly-shaped, frame structure and soon the whole building was ablaze. No one was injured but the entire building and almost all of its contents were destroyed, except for some belongings of a few summer boarding families.

Construction began shortly after that on a new house, although one smaller in size. Evidently the plan was to continue the school and summer boarding because the layout of the current house lends itself to such functions. In addition, a recruiting ad appeared in an 1897 issue of *The Bookman*, a literary journal:

St. George's School

St. George's MD, in the Highlands.
22nd year.

Twenty boys, college or business,
individual training,
permanent home if desired,
building entirely new,
extensive grounds, all modern comforts,
refinement, strictness and kindness.
\$250 to \$300.

J. C. Kinear, A. M., Prin.

Prof. Kinear died at home on November 12, 1901. He was 73 years old. The following year, his widow Mary sold the property of almost 14 acres to Otway Berryman Zantzing, owner of a real estate business, who lived in Hyattsville, Prince George's County, with his wife Sarah and their children. Then in 1906 the Zantzingers sold to Emma H. Forbes who, in turn, conveyed the property in 1911 to Paul and Sarah Levy, perhaps the only Jews to live in the Glyndon area at this time. Paul had immigrated to Baltimore City, along with his brother Jacob, from a part of Lithuania where Jews were forbidden by law to own land and could not hold public office. While his brother

Mission Statement

The mission of HGI is to preserve and protect Glyndon's cultural, social, economic, and architectural history, as well as to conduct educational and beautification projects which enrich Glyndon's historical heritage.

HGI Board for 2019

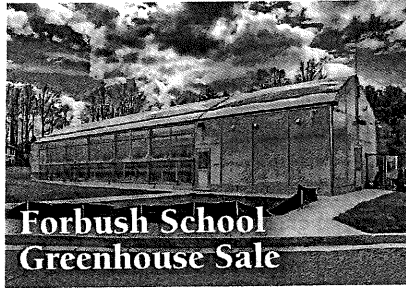
President: Pamela Becker
1st Vice President: Nicole Crumpler
2nd Vice President: Richard Stanley
Treasurer: Paul Crampton
Secretary: CJ August Gulley
Immediate Past President: Mary Ellen Porter

Board Members' Terms Ending January 2020

Patty Szparaga Marian MacDonald
Diane Flayhart Kathy Ziese

Board Members' Terms Ending January 2021

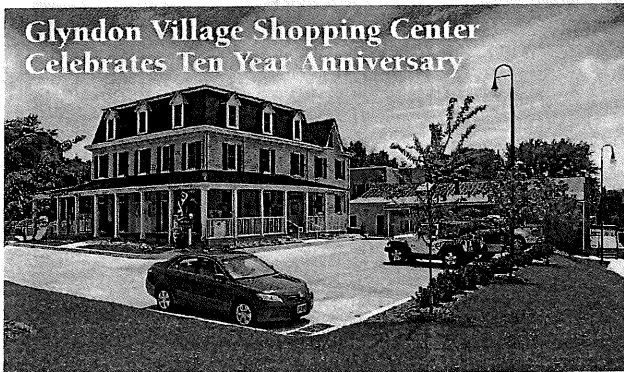
Sue Benson Vernene Lenz
Polly Papp Jayme Hux Provencher
Jamal Robinson



The spring plant sale at Forbush School is coming soon. The greenhouse will open on April 15 at 407 Central Avenue, Glyndon. The hours are Monday – Friday from 10:00 am to 3:00 pm.

Forbush also has two ongoing projects. They collect eyeglasses for the Reisterstown Lions Club, and they will be having a spring book sale with all proceeds going to St. Jude's Children's Hospital.

Donations for both projects can be dropped off at the Hannah More Campus at 12039 Reisterstown Road.



The Glyndon Village Shopping Center just celebrated its 10th birthday this winter. Ten years ago, the Country was mired in a deep recession. Bringing tenants into the newly opened Shopping Center was a challenge because many interested businesses could not access financing as banks turned off their business loan spigots. Ten years later our Center is nearly full and most

of our tenants are the original businesses that joined the Glyndon community ten years ago. The list of our original tenants includes J&P Pizza, Subway, Northwest Dental, Dr. Gredlein, DPM, Black Eyed Susan,

and The Boxwood Collection. We have a few new tenants in the mix including Sunset Slush who joined us last year. If you have not tried their Italian ice you need to this Spring-it is spectacular! We have a few openings in the mansion including some very reasonably priced office suites and one retail space. For more information contact Bob Geis At 410.299.2800.

Thank you to the following businesses who are 2019 members of HGI:

Black Eyed Susan; The Boxwood Collection; Gettier-Montanye, Inc.; Glyn-

don Lord Baltimore Cleaners; Glyndon Square, LLC; Karlsen Food Systems; Misguided Angels Interior Design; Jay Toth, DDS; The Wine Post; Woman's Club of Glyndon



Woman's Club of Glyndon:

SAVE THE DATE! Lunch with Rosie is riveting! Saturday, May 11th at 12 noon with award-winning actress Mary Ann Jung portraying Rosie the Riveter at Trinity Lutheran Church, 109 Main Street, Reisterstown MD 21136, sponsored by the Woman's Club of Glyndon.

Bring your friends and family (including men!) and history buffs! This event will also include Raffle Baskets and Jewelry/Scarf Boutique! Tickets \$30. Call Karen (410 833-1006)

GVFD Upcoming Events:

Second Friday of every month
GVFD Movie Night
April 6th 8am-11am Easter Breakfast
April 24th Texas Roadhouse WEST-MINSTER fund raiser
April 27th 1-4pm Spring Open House
June 8-9 Summer Bazaar and Flea Market
August 6th National Night Out In Glyndon Event
August 24th Annual Crab Feast – Tickets \$50
October 5th 1-4pm Fall Open House
October 26th Trunk or Treat 1-4pm
December 7th 8am-11am Santa Breakfast

GCA Upcoming Events:

April 13th at 10 am Easter Egg Hunt
June 8 – 9th Joint GCA and GVFD 2 day yard sale (please make reservations through GCA (glyndoncommunityassociation@gmail.com))

remained in the City to run a cloth-shrinking business and to get involved in politics (he ran for the United States Congress on the Socialist ticket), Paul left the clothing manufacturing business. He chose, instead, to live the life of a rural, gentleman farmer, a life very different from most Eastern European Jewish immigrants of the time who usually opted for city life.

In 1912 the Levys acquired additional land and their small farm now totaled 19 1/2 acres. The Levys seemed to assimilate very well into the Christian community. They were active participants in a number of local organizations, including the Glyndon Grange, an agricultural and fraternal group. When Paul Levy died in 1941, as a tribute to his wife Sarah, who predeceased him, he willed money to those community groups.

The Levys also maintained their Jewish connections. They attended temple at Har Sinai, a synagogue located in the City at the time, which was reached, most likely, by train from St. George's Station or by trolley from Glyndon. An endearing peculiarity of Mr. Levy was that he named his cows after Jewish holidays, such as Yom Kippur and Rosh Hashanah.

The Levys never had children and relatives, Charles and Fannie Katz, inherited the property upon Paul's death.

Researched & written by Ann B. O'Neill

Around the Firehouse

Since 1904, your Glyndon Volunteer Fire Department has strived to bring the members of our community quality fire protection and emergency medical services, and 2018 has been no exception. In fact, 2018 was one of the most productive and forward-thinking years since a small group of Glyndon residents met in 1904 following the devastating fire that claimed The Glyndon Depot. In 2018 your Glyndon Volunteers answered 837 Fire Calls and 930 EMS Calls. These numbers represent a growing trend within not only our community, but in the nation as a whole, as calls for service are increasing, putting considerable stress on volunteer fire companies. Some of you may wonder, "Who are these people answering these calls?" These are your neighbors, both near and far, who decide to give their time, with no expectation of compensation to help those in our small community.

The members of the Glyndon Volunteer Fire Company are looking to the future and have already made changes to the operations of our company to better assist those in need, including the addition of ambulance service and the purchase of new Ambulance 405. The members of the company are also seeking to build a new building, given that our current building has stood since 1956 and is not designed to meet the needs of a modern-day fire company. However, we press on and continue to provide the best service we can, given our small and out-of-date facility.

The company is always looking for new and motivated members who want to do more for Glyndon and the surrounding areas. So if you're looking for camaraderie and an experience far from ordinary consider picking up an application and applying for membership today!

Yours in service,

Timothy B Maynard, EMS Sgt, GVFD



Glyndon Train Station Rehabilitation

Since 1904 to the present, the Glyndon Train Station has been one of the most active centers of life in our community. As with all treasured older structures, the Glyndon Train Station building requires consistent and vigilant upkeep. For this reason the GTS LLC will be undertaking three maintenance projects this spring and summer:

1. Repointing of the brick piers supporting the porte-cochere, along with repair of one brownstone capstone;
2. Rebuilding and reinstallation of the cupola that blew off the building during the windstorms last March, 2018; and,

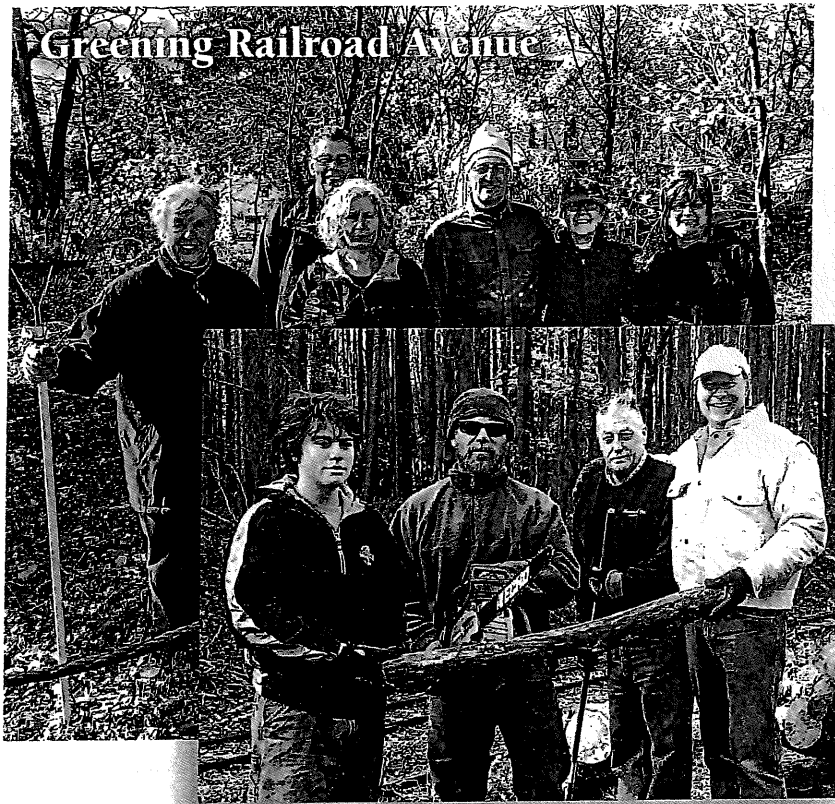
3. Exterior repainting of all of the wood and metal surfaces.

We expect to be under contract with a stone mason for the work on the porte-cochere piers by the beginning of April. Work will likely start after May 1, following Maryland Historical Trust approval of a mortar analysis and new mortar composition. MHT holds a Preservation Easement on the 1904 building. Painting and cupola work will follow this summer.

The GTS is deeply grateful to Historic Glyndon, Inc. for the donation made last year to assist GTS LLC in funding these maintenance projects at the Train Station. Without the funds from HGI, we would not be able to start even the

porte-cochere pier repairs, which are seriously needed. Preservation Alliance of Baltimore County has also helped with funding by pledging a grant to the GTS LLC for these projects. In addition, we have applied, now for the second time, to Preservation Maryland for a Heritage Grant.

The GTS LLC is comprised of 37 Glyndon families and 3 local businesses/organizations who banded together in 1999 to purchase the Train Station building in order to keep this important Glyndon landmark as a central fixture in our community. Interested neighbors are encouraged to inquire with our president, Bob Kaestner about becoming members: bkaestner@comcast.net



In 2005 Mrs. Mary Lou Beehler donated funds to the Glyndon community for planting trees along Railroad Avenue to screen the view of the school bus parking lot across the railroad tracks. Mrs. Beehler is the great-granddaughter of Patrick and Anna Dyer who, in 1873, built and lived in the house that previously stood across the tracks from the Glyndon Train Station. Her gift provided the trees that we now enjoy between Railroad Ave. and the tracks, across from Glyndon Station Park. It was Mrs. Beehler's hope that the entire length of Railroad Ave. could be beautified with trees in memory of her family's affection for Glyndon.

The idea of extending the tree planting along the remainder of Railroad Ave. was discussed with the Baltimore County Department of Environmental Protection & Sustainability, as well as CSX who owns the tracks, seeking their approval. After gaining these approvals, Charlie and Meredith Wells donated and planted a group of trees in 2017 along Railroad Ave. at the end of Glyndon Ave.

Along the way, volunteer crews of Glyndon residents in 2013 and again in

2015 made great improvement to sections at both ends of the Avenue, cleaning up fallen and dead trees and trash. See if you recognize any neighbors in the accompanying photos.

All of these efforts contribute to the improved streetscape for the many walkers, joggers, and cyclists, as well as moms (and dads) with baby strollers, using "The Avenue."

We would like to enlist the participation of Glyndon residents to continue Mrs. Beehler's desire to see all of Railroad Ave. planted with trees. This will involve acquiring young evergreen trees, along with some ornamentals, and assembling several work parties this spring and summer to clean out old and dead growth, and planting several groups of trees along the berm between Railroad Ave. and the tracks.

Work parties are planned for April 13 and May 25. We will start with clearing out overgrown and dead growth. If you would like to pitch in by contributing to the tree fund and / or by participating in the work parties, please contact Charlie Wells, cwells0950@aol.com.

Charlie Wells

One District for Glyndon

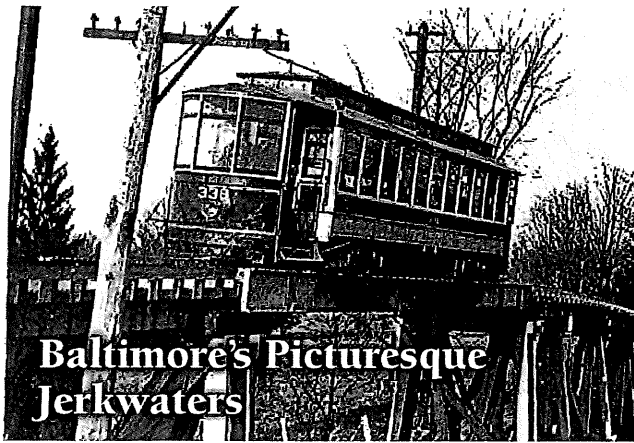
GCA is currently considering a One Glyndon united legislative district campaign. Statewide redistricting will occur in 2021. GCA is proposing a lobbying campaign to bring both parts of Glyndon together. Currently, Glyndon is split into two separate Baltimore County Councilman districts, along Butler Road. The south side of Butler is in District 2 and the north side (fire station side) is in District 3. We are looking to streamline the administrative process by reducing the number of legislative offices that are presently required for the majority of community ordinance proposals through District 2 and District 3. A united Glyndon would either be completely in District 2 or 3 and consolidate our community into a single entity for the purpose of legislative expediency. We are presently studying the pros and cons of merging Glyndon's position in Districts 2 and 3.

Polly Papp, 2nd VP, GCA

Non-Contributing Structures in Our Historic District and Exterior Changes

A non-contributing structure is one located within our Baltimore County Historic District that does not relate to the historic period designated (roughly pre-1930). While not eligible for rehabilitation tax credits, homeowners must go through Baltimore County Landmarks Preservation Commission when making exterior changes to the structure or property. Non-contributing structures, however, are treated differently than contributing ones. The process is less involved than that used for contributing structures, similar to the guidelines of regular county permits. LPC does tend to look for a higher level of quality in the work being done and in the materials being used. They also want to make sure that good planning principles are employed. Changes scrutinized more carefully tend to be additions and in-fill (new houses). Please contact Baltimore County Landmarks Preservation Commission if you have a question regarding your property: 410-887-3495 or histpres@baltimorecountymd.gov.

Ann O'Neill



Baltimore's Picturesque Jerkwaters

Jerkwaters??? That is certainly a new term for me. It came up not too long ago when I met a former Pikesville resident and streetcar expert, Bernie Sachs. Bernie was working on a book about a special series of streetcar lines in the Greater Baltimore area. The complete title of the book is *Baltimore's Picturesque Jerkwaters: Historic Neighborhoods, Notorious Beer Gardens, Serene Lakeside Pavilions, Beachsides by the Bay, Mills in the Valley & To Every Corner of the Metropolis*.

The term "jerkwater" originated in the early days of railroads when locomotives with very small boilers required frequent refilling of water. Trackage water tanks were few, so train crews carried leather buckets on long ropes with which they could "jerk water" from streams along the tracks. As Bernie says in his book, the term has come to mean street railway systems of Baltimore that were "(1) short in length, sometimes but a few blocks long, or (2) a lightly patronized branch or appendage of a busy trunk lines, or (3) a distinctly rural route often traversing a lightly settled countryside before ending at a small community, or (4) single track for all or most of its length, or (5) some combination of the above."

Besides containing a lot of information about unusual streetcar lines and local history around Baltimore, Chapter 32 of the book is all about Glyndon's line: originally the Pikesville, Reisterstown & Emory Grove Railway. It ran from Pikesville, up Reisterstown Road through Owings Mills and Reisterstown, through Glyndon, and then terminated near the entrance to Emory Grove. After discharging incoming visitors and taking on departing guests, it circled around the Loop House (32 Waugh Avenue) to return south. This line played an important role in our village's connection to the rest of the world, transporting businessmen to Baltimore, taking children to school in Reisterstown, and bringing hoards of summer visitors to the two meeting camps here, Emory Grove and Glyndon Park.

All proceeds from the book, *Baltimore's Picturesque Jerkwaters*, go to the Baltimore Streetcar Museum on Falls Road in Baltimore. The book is available for sale at the Museum, at Ivy Bookshop in Mount Washington, and through Amazon online. Baltimore County Public Library also has several copies for loan.

Another perspective on Glyndon's storied past!

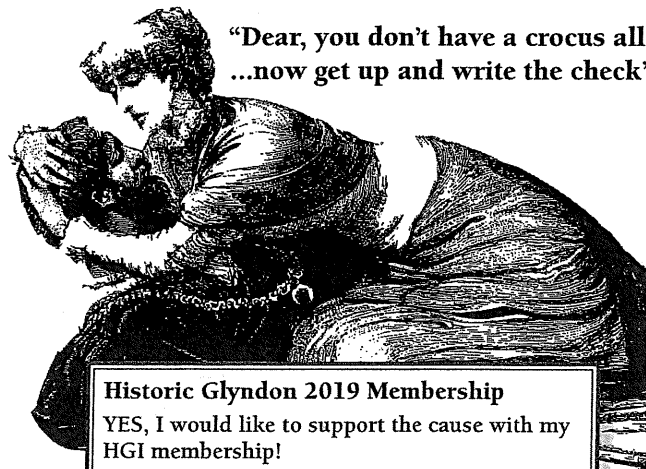
Ann O'Neill

Glyndon's Imminent Patriotic Wave

Spring approaches, and so shall the numerous United States flags that line the streets of our fair town. For the past several years this Norman Rockwell-like appearance has been provided by volunteers Bud Piccirilli (313 Railroad Ave.) and Dave Hughes (2 Albright Ave.). The campaign's first season was instigated by Piccirilli, who put a few flags up on utility poles in front of his home and a couple around the corner on Albright Ave. One thing led to another, including commandeering Hughes the following year, and the patriotic pair now maintains nearly 60 flags along Central, Railroad, Chatsworth, and Albright Avenues. Several additional Glyndon residents also erect Old Glory here and there, and the Glyndon Community Association places its sequence of flags along Butler Road, all making for a splendid presentation. The duo's colors go up by Memorial Day and are displayed for residents, their guests, and daily commuters to enjoy until Labor Day.

In addition to frequent inspection and periodic replacement due to Mother Nature's fury, Bud and Dave occasionally prune obstructing tree branches, with homeowners' permission, sometimes with the able assistance of Hank Shoemaker (311 Railroad Ave.) and Dee Ruppenthal (322 Central Ave.), and a jocular time is reportedly had by all.

Driving or strolling through our town on glorious spring and summer days is enhanced by these waving star spangled banners. Those expressing gratitude have been known to nab Piccirilli or Hughes to make donations to help cover upkeep and replacement flags. Glyndon is indeed a community of warmth, philanthropy, and volunteerism, these chums yet one more example. Staff



**"Dear, you don't have a crocus allergy...
...now get up and write the check"**

Historic Glyndon 2019 Membership

YES, I would like to support the cause with my HGI membership!

Membership dues are \$10.00 per person or \$20.00 per business per year. Make checks payable to HGI and send along with this form to

Historic Glyndon Incorporated
PO Box 3641
Glyndon, MD 21071

Name(s): _____

Address: _____

Telephone: _____

Primary Email: _____