



Historic Glyndon Baltimore County's First Historic District



# Community Newsletter

Historic Glyndon, Inc., Spring 2018 • <http://historicglyndon.org>

## President's Letter

Dear Glyndonites:

Thoughts on a snowy day. Today is a "snow" day for most of Maryland and for me as well. Somewhere under the growing accumulation of snow are blooming crocuses and hellebores, and daffodils with their yellow petals starting to emerge. Glyndon is really quite lovely in the falling snow, and with few cars driving by, it's easy to picture our charming village as it once was 100 years ago.

The advent of spring marks the beginning of outdoor activities and time spent relaxing on porches. Although blanketed by snow now, for many of us spring and summer also means spending time at the Glyndon

Pool. Our neighborhood is blessed with many lovely historical structures, but few of us recognize that the Glyndon Pool has a lasting place in our community's history.

In 1931, the then-owners of the Glyndon Laundry on Central Avenue, Mr. and Mrs. George Merrick, built the pool on an adjacent property. Rumor has it that it was excavated by mule teams – pairs of mules pulling a digging blade that scooped out dirt to create a foundation. A later owner of the Glyndon Laundry and the pool, Robert Mathias (John Garman's grandfather) sold the pool to Glyndon residents who formed a stock company to purchase the facility. This type of community preservation would be repeated in December of 1999 when a similar group of Glyndon neighbors formed the Glyndon Train Station LLC to

buy and save our local train station.

The local pool has played a major role for the families and youth of Glyndon. Hundreds of children learned to swim there, and families gathered in the heat of summer to stay cool and socialize with their neighbors and friends. Though the high dive and floating raft were removed years ago, the water slide and ever-popular snack bar remain as permanent fixtures of a much loved neighborhood landmark.

Somewhere under all this ever-increasing pile of snow lie promises of a spring and summer to come. In the meantime, I am going to read through my pile of garden catalogs and warm my toes on the whistling radiator.

Pamela Becker

*President, Historic Glyndon, Inc.*

## Don't miss the HGI April 25th Membership meeting!

The HGI Membership Meeting will be held on Wednesday, April 25th at 7:00 pm at Forbush School.

*And stay tuned for more information about HGI's Historic Preservation special program coming in May!*

## News from Emory Grove

2018 marks the 150th Anniversary of Emory Grove. Last year was our 150th season, but 2018 is our Anniversary. We need to celebrate and we are planning to do just that. The 150th Anniversary Committee has been meeting and there are lots of exciting events planned. In addition to our annual inspirational Sunday evening worship services, there will be more Sunday morning services this year. Most events begin at 7pm, but check the website, or our Seasonal Calendar that we are giving out this summer for times.

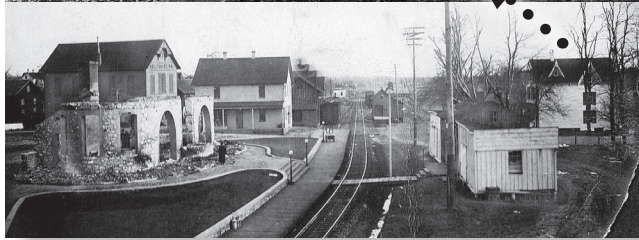
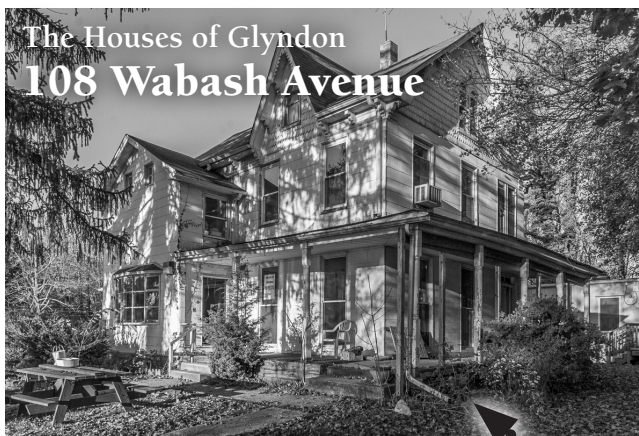
Some highlights of our Anniversary season:

- Ice Cream Social with Gospel on the Porch, Photo Booth and Anniversary Cake on June 23rd

- ELVIS! in the Tabernacle on July 1st after dinner at the Hotel
- Monday night talks: "Spirits of Emory Grove" on June 18th "Many Happy Returns: Baltimore's Bygone Department Stores" on July 16th "Sound" Advice, including a hearing screening, on August 13th
- Thursday night concerts: Duo Sopranos on June 28th Low Brass Ensemble on July 26th "Allegro con Fuoco, Keyboard Duo" on August 23rd

Kathy Mellott

*President, Emory Grove Association*



The original house at 108 Wabash Avenue was razed in January of 2018 by the Baltimore County Public Schools, who owned it as part of a school bus depot lot. Very little had been done to preserve and maintain the building and it had deteriorated to the point where the school system insisted that they demolish it.

Being one of the very first houses constructed in the fledgling village of Glyndon, even before it was named Glyndon, the house was built for an Irish-born couple, Patrick and Maria Dyer. Prior to their 1860 marriage, Maria lived in New Jersey with three children from a previous marriage: Katherine, Harry Patrick, and Michael Murray. Patrick and Maria settled in nearby Reisterstown before buying 86 acres on which they built their new home where they had four children: Annie, Frank, John, and Alexius.

The Dyer house (ca. 1873), was constructed directly across the tracks from what today is the post office housed in the former train station. It was a folk clapboard Victorian with a gabled roof. The outbuildings included a stable and a frame warehouse that most likely served as a train station along the tracks in the interim before Samuel P. Townsend built his general store in 1875, which offered a ticket office and waiting room. The first true Western Maryland Railroad station was not constructed until 1895.

Before buying this extensive acreage in Glyndon and trying his hand at farming, Patrick had worked for the Western Maryland Railroad. Later, he started his own brick manufacturing business in Glyndon. His obituary in *The Sun* [Baltimore] states that he “was prominently identified with the improvements and growth of the present town of Glyndon.” (4 Feb 1899)

The Dyer family played a major role in bringing a Catholic church to the area. Prior to the 1870s, there was no such church between Westminster and Pikesville. Roman Catholics in the area had great difficulty getting to services. Legend has it that one day Father Edmund W. S. Waldron, a Catholic priest from Philadelphia, walked into Mrs. Dyer’s

store and announced that he would build a church. Mrs. Mary Lou Beehler, Mrs. Dyer’s great-granddaughter, recounts that Mrs. Dyer took off her apron and declared, “I know where you can put it.” According to a Baltimore County deed record, Patrick and Maria Dyer conveyed nine acres of land to Archbishop James Roosevelt Bailey of Baltimore on January 12, 1874. Sacred Heart Parish was established in Glyndon the same month and construction of a church began shortly thereafter, completed in 1875.

While the house was in Glyndon’s national historic district, it was not part of the local Baltimore County historic district. Therefore, it was not protected from demolition.

*Researched and written by Ann B. O’Neill*

---

## Updated Historic Preservation Website

It’s that time of year again - Spring is here and it is time to dust off remnants of winter and tune up the neighborhood historic homes for another season. Before we all scramble to book contractors, we should ensure the time and money spent on new plans will be worthwhile. The first step is to check out the newly updated historic preservation website for guidelines and review considerations.

The Historic Preservation Design Guidelines are combined with the planning checklist to assist with all of your renovation ideas. All plans for exterior construction, alterations or removals should be submitted to Baltimore County Historic Review so that you can avoid citations or eventual fines. The Baltimore County Landmarks Preservation Commission has worked hard to improve the process to be faster and more painless by creating a new, direct e-mail address for the entire team ([histpres@baltimorecountymd.gov](mailto:histpres@baltimorecountymd.gov)) so that your requests are never missed, and an upgraded website with new information and forms ([www.baltimorecountymd.gov/Agencies/planning/historic\\_preservation/applications.html](http://www.baltimorecountymd.gov/Agencies/planning/historic_preservation/applications.html)).

On the site are user-friendly How-To’s, instructions on what will and will not be approved by the team, and new interactive forms. You can find pictures, diagrams, and measurements to provide an exact idea of what would be approved by the Landmarks Preservation Commission; plus, it also shows some outstanding historic homes around the area.

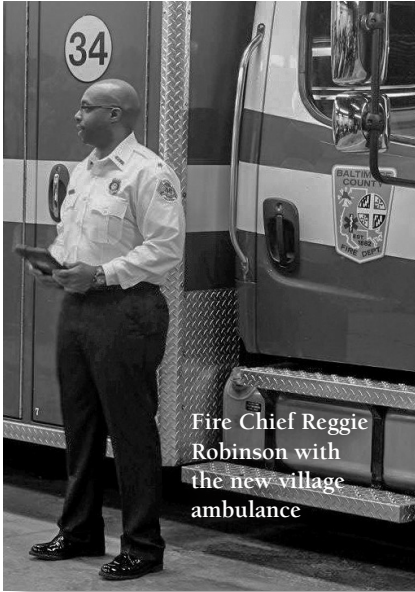
Once you complete the process and your plans are approved, your ideas can come to life. Also on the website you will find information about submitting your renovation plans for tax credits. It explains the stipulations on both exterior and interior changes, and also features new, user-fillable PDF forms. It is definitely worth taking the time to be familiar with the Historic Guidelines and checklists since they could result in substantial savings.

By now, we should all be familiar with the rules and regulations of living in a historic district. So, as we trade in our shovels and snow boots for mowers and flip-flops, keep in mind that your renovations, DIY projects, and rehabilitations can be trouble-free when you check out the upgraded website and have your plans reviewed by the board. Good luck to all, Happy Spring!

*Sydney Szparaga*



## Glyndon Volunteer Fire Department *Susan Bollinger, President GVFD*



Fire Chief Reggie Robinson with the new village ambulance

For the first time in the company's 113-year history, the Glyndon Volunteer Fire Department is pleased to announce the addition of ambulance service. Since the company's inception in 1904, the mission of the officers and members has been to protect life and property by providing the most up-to-date service to the community of Glyndon, Baltimore County, and surrounding areas. In reviewing the needs of the community and the types of calls we were running it was determined that ambulance

service was the greatest need. Not only is emergency medical services the majority of our call volume, but our citizens were experiencing prolonged wait times for the closest ambulance to arrive due to the needs of not only our area but of surrounding areas. On January 1st we placed Ambulance 405 in service and on January 3rd it was dedicated to our community in thanks for their support. We are proud to have served you for over the last century and hope to serve you better in the next century. Without the help of Baltimore County and the community we would not have been able to add this service. We are hoping that by midsummer we will be looking at replacing the County reserve unit we are currently running with our own permanent unit. To help cover some of these costs, we will be doing several fund raisers and hope that we can get your support.

With spring hopefully here, the company is looking to move its movie nights back outside, with our next movie being *Moana*. Please watch the sign for dates and times. All movies are free admission and we will be selling snacks and popcorn. Bring your family out for a fun evening and watch the Movie of the Month.

We will be having our Annual Crab Feast again in August and tickets will be going on sale soon. Please come attend our biggest fundraiser of the year. The event sold out the past two years and we hope that it will do so again.

If you are looking for a place for your child's birthday party, please come see us. We offer fire engine rides, helmets and coloring books for your guests, and an opportunity to try on gear and get a look at firefighting and fire prevention.

We are always looking for new members and you do not have to be a firefighter or EMT to join. However if that is your desire, we can get you free training. If not, we can always use administrative help for fundraising, public relations, record keeping, information technology, finances and many other tasks.

There are a lot of exciting things going on in and around the station and we will be sharing them as we move forward, to improve service to our community. If you have any ideas on things that we can do to help you or raise monies to move our mission forward please stop in; we are always open to new ideas.

## Severe Weather and Historic Structures



In light of recent, devastating natural disasters and some

local severe weather earlier this year, Teri Rising of Baltimore County's Landmarks Preservation Commission, recently passed along this information:

Staff does have the ability to review and approve work in emergency circumstances and, whenever possible, fold in tax credit review and approval. Priority will be given to those who need work done immediately and cannot proceed without historic review and approval, particularly properties in County Historic Districts and landmark sites. We will get to everyone as quickly as possible. If life and safety are a factor, a

County building engineer or inspector can also be consulted and any issues will be addressed.

In cases of emergency, sometimes the day after brings predatory "contractors" who go door to door trying to sell quick fixes. Stay on the lookout and ask questions if they come calling. Remember County Building Permits are required for work, and the Permits Department offers homeowners information needed and what to look for in a legitimate contractor:

<http://www.baltimorecountymd.gov/Agencies/permits/buildinspec/index.html>

It is also a good time to remember to check your gutters and downspouts for clogs and to protect and stabilize anything that is particularly vulnerable to inclement weather. The Maryland Emergency Management Agency has some emergency preparedness tips

for homeowners that might be good to share. <http://mema.maryland.gov/Pages/homeowners.aspx>

### Roadside tree problems?

Baltimore County offers low cost services for roadside trees within the public right-of-way. Some services provided include:

- Trimming of limbs blocking streetlights, traffic warning signs or causing site distance issues at intersections
- Elevation of limbs blocking public sidewalks
- Removal of dead, storm damaged or broken limbs

If you have a tree that needs attention, email the Bureau of Highways at [highways@baltimorecountymd.gov](mailto:highways@baltimorecountymd.gov). The bureau will first determine if the tree is within the county right-of-way. To read more, search for "tree removal" at [www.baltimorecountymd.gov](http://www.baltimorecountymd.gov).

## Mission Statement

The mission of HGI is to preserve and protect Glyndon's cultural, social, economic, and architectural history, as well as to conduct educational and beautification projects which enrich Glyndon's historical heritage.

## HGI Board for 2018

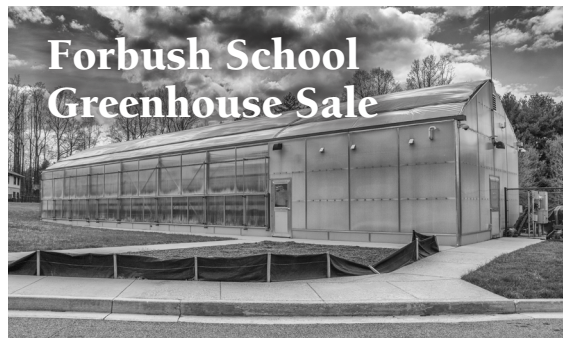
President: Pamela Becker  
1st Vice President: Fran Acle  
2nd Vice President: Richard Stanley  
Treasurer: Paul Crampton  
Secretary: CJ August Gully  
Immediate Past President: Mary Ellen Porter

## Board Members Terms Ending January 2019

Sue Benson Vernene Lenz  
Polly Papp Jayme Hux Provencher  
Teresa Moore

## Board Members Terms Ending January 2020

Nicole Crumpler Patty Szparaga  
Diane Flayhart Kathy Ziese



The students and staff of the Forbush School Horticulture Program are looking forward to seeing and servicing everyone during another spring sale in our greenhouse. Our sale will start Wednesday, April 18th, and will be open every school day from 9:00 – 4:00 while supplies last. Annual and

perennial bedding plants, herbs, interior plants, and hanging baskets will be available for purchase. Your support goes well beyond that of a monetary nature—our students benefit greatly from their customer interactions and from seeing the fruits of their labor being valued in a real work setting.

Thank you for considering us as part of your community, and see ya' in the greenhouse!

407 Central Ave., Reisterstown, MD 21136  
410.517.5620 greenhouse  
410.517.5456 classroom

## Glyndon Community Association News

The annual Glyndon July 4th parade will again be coordinated and hosted by The Glyndon Community Association. So get ready to shine up your bicycles and proudly wear your red, white & blue for this wonderful community event.

## Woman's Club of Glyndon

The Woman's Club 10th Annual Fashion Show will be held Saturday, May 19th at Northminster Church, 705 Main Street, Reisterstown. Doors open at 11:30 a.m. and lunch will be served at noon followed by modeling of Christopher and Banks fashions. Tickets are \$30. Call Karen at 410-833-1006 for tickets.



**2017 Holiday Open House**  
On December 3rd, Glyndon residents joined their neighbors in celebrating the 34th annual Glyndon Holiday Open House at the home of Janet Clinton. Visitors were treated to a wide selection of traditional refreshments, caroling, and the opportunity look at the homeowner's amazing and extensive collections.



**“Dear, the lights came back on...  
...now just go write the check”**

### Historic Glyndon 2018 Membership

**YES, I would like to support the cause with my HGI membership!**

Membership dues are \$10.00 per person or \$20.00 per business per year. Make checks payable to HGI and send along with this form to

Historic Glyndon Incorporated  
PO Box 3641  
Glyndon, MD 21071

Name(s): \_\_\_\_\_

Address: \_\_\_\_\_

Telephone: \_\_\_\_\_

Primary Email: \_\_\_\_\_

If you were unable to attend our annual meeting in January or have forgotten to pay your dues, you can send them in now. Don't miss out on all the newsletters, programs, and activities that HGI has planned for this year!